



1. Product name

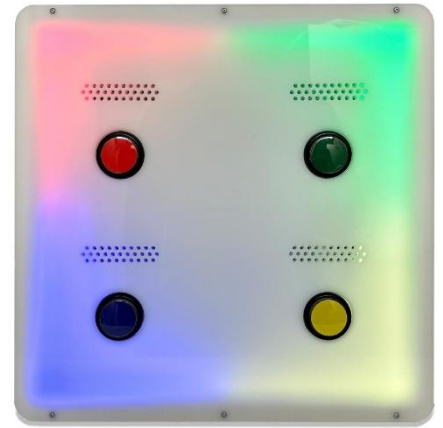
Nenko Interactive - Aroma panel

2. Product code

29107085

3. Colour

As shown



4. Short description

The interactive aroma panel offers a versatile and customizable aromatherapy experience. It comes with four scent cartridges, which you can fill with different essential oils. The aroma panel then diffuses delightful aromas into the area to enrich the environment with a loving scent. With scents like soothing lavender to invigorating eucalyptus, the possibilities are endless. The oil pads in the cartridges are easy to change, allowing you to cater to the needs and preferences of the users.

5. Sensory stimulation

Touch, hearing, and sight

6. Maintenance

If cleaning the product becomes necessary, use only a soft damp cloth. Do NOT use aggressive chemicals or abrasive cleaners.

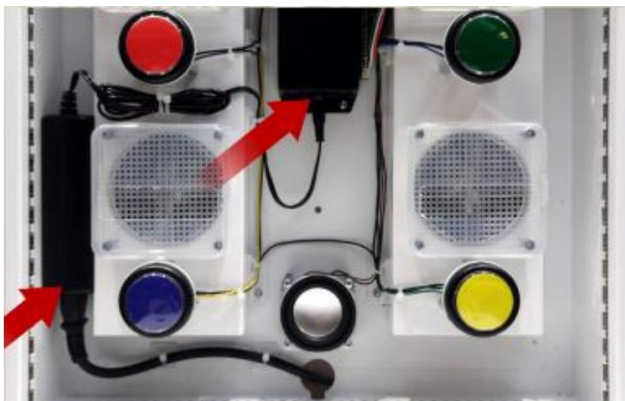
7. Electrical Specification

Input: 100-240V 50/60Hz,
1.5A Output: 12V 5A

8. Troubleshooting

The Aroma Panel is designed to require minimal maintenance. If problems occur:

- Make sure the device is switched off and disconnected from the mains and check that the power cables have not come loose.





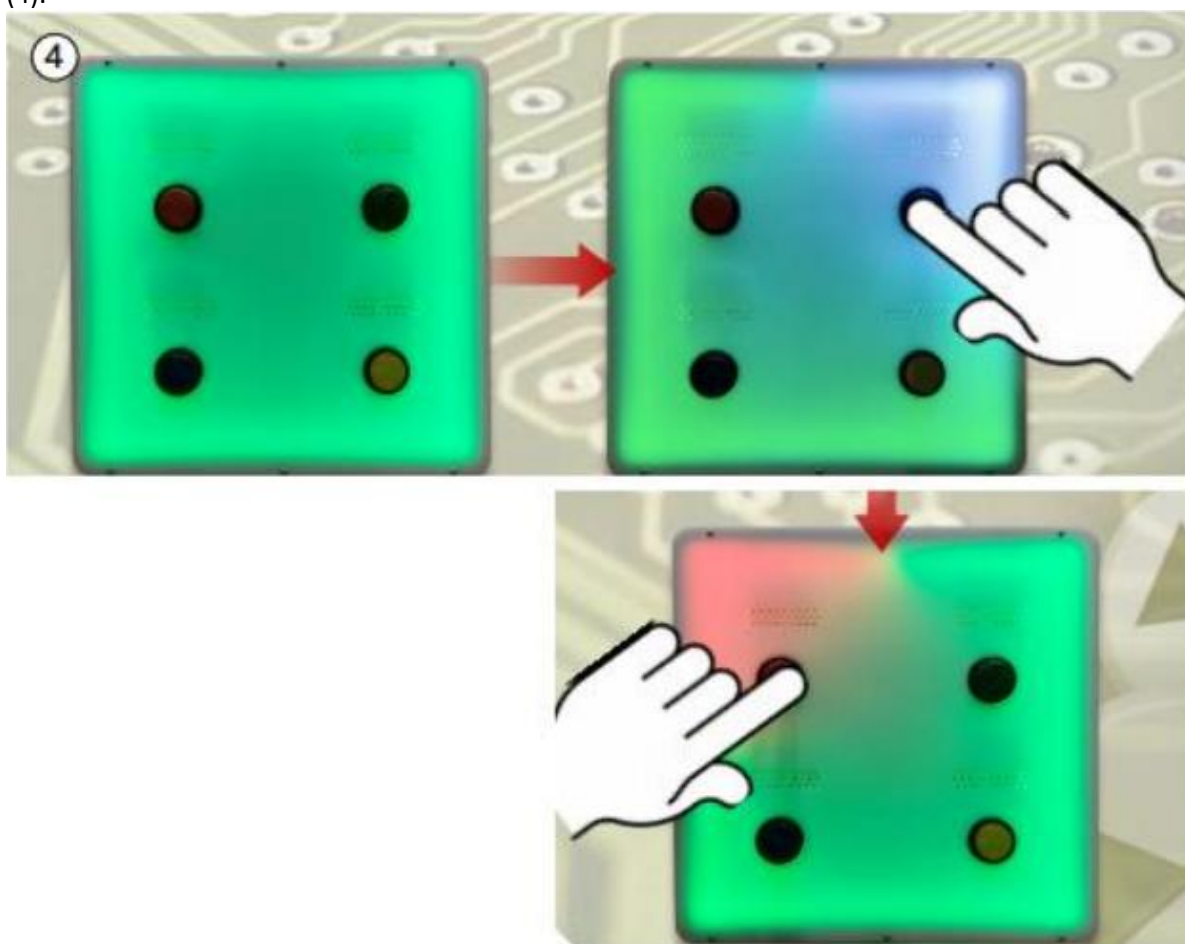
- Use the on/off button to turn off the device. Unplug it from the socket and leave it for 1 minute to perform a reset. After this time, reconnect the plug to the mains and switch the device back on.

9. Operation

The function buttons on the remote control can be used to activate the fans. When activated via the remote control, the fans remain on for 5 seconds.

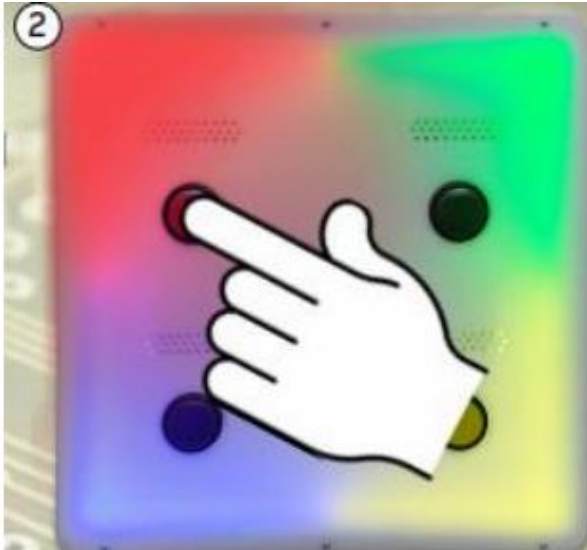
The robust buttons on the panel can still be used as normal.

In full-color mode, the quadrant LED colors will still be activated to indicate which one is active. Note that when the dominant LED color quadrant is activated, it will now light up white so that it can still be identified. For example, if the dominant LED color is green, that quadrant will light up white when the green button is pressed. The other quadrants will continue to light up in their respective colors (4).





There are 4 robust buttons on the front of the panel, each controlling a colored quadrant. When one of these buttons is pressed, it will play a sound effect, the LED color will shine more brightly, and the internal fan will blow the scent fragrance from the relative ventilation opening. The fan blows as long as the button is pressed (2).



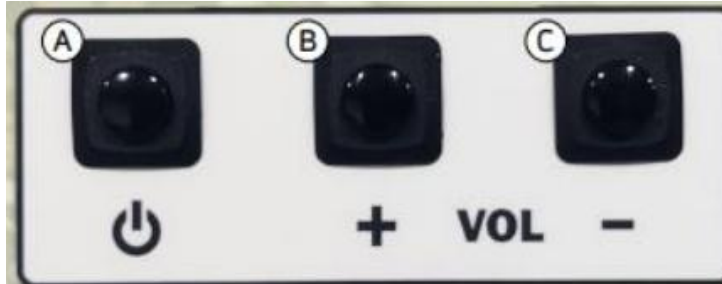
The Aroma Panel can be paired with compatible remote controls, allowing functions to be activated remotely.

A paired remote control can also be used to change the full LED color of the panel (3).





At the top of the Aroma Panel, you will find these 3 buttons:



A. Power On/Off

Hold this button for 1 second to switch the device on. Repeat this process to switch the device off.

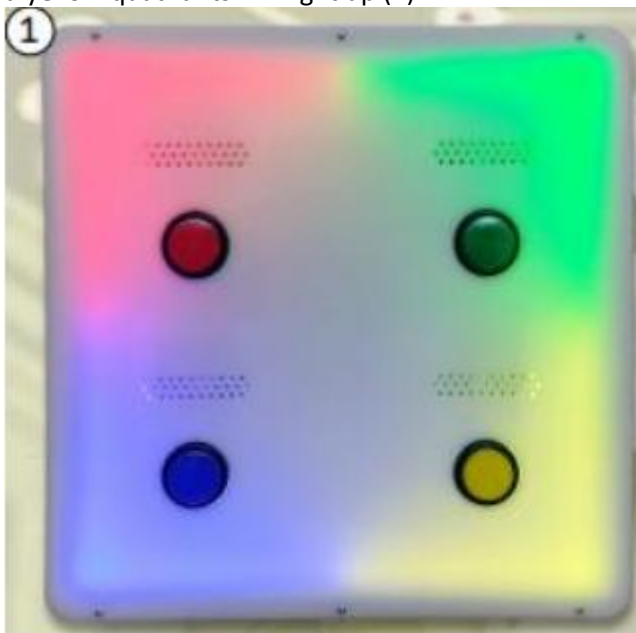
B. Volume Up

Pressing this button once will increase the volume.

C. Volume Down

Pressing this button once will decrease the volume.

When the device is switched on, you are greeted with a startup sound effect and the red, green, blue, and yellow quadrants will light up (1).



9. Installation

To begin, prepare 4 hanging fixings on the desired surface. Refer to the hanger slot dimensions on page 4 for the correct layout.

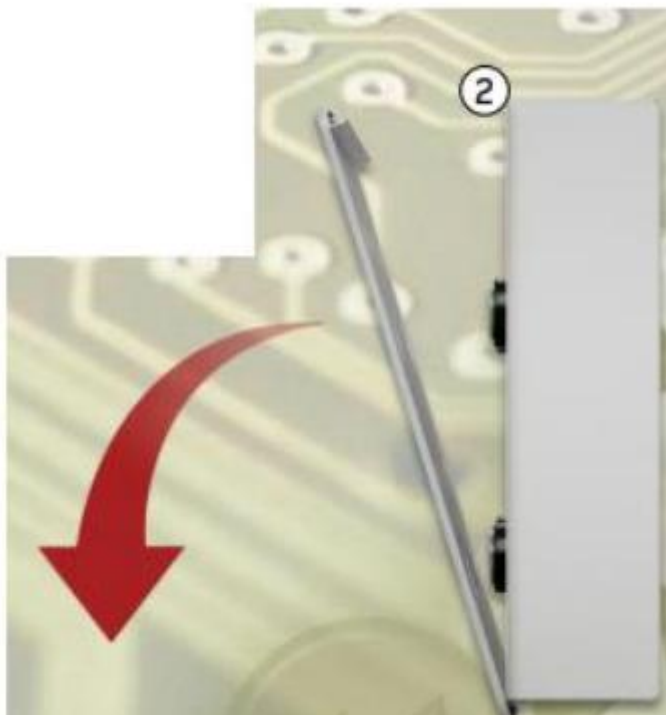
Once the fixings are installed, the Aroma unit can be positioned. Do not lift the device by the perspex front panel.

Access to the inside of the device can be gained by loosening the 2 fixings at the top of the device using the supplied Allen key (1).

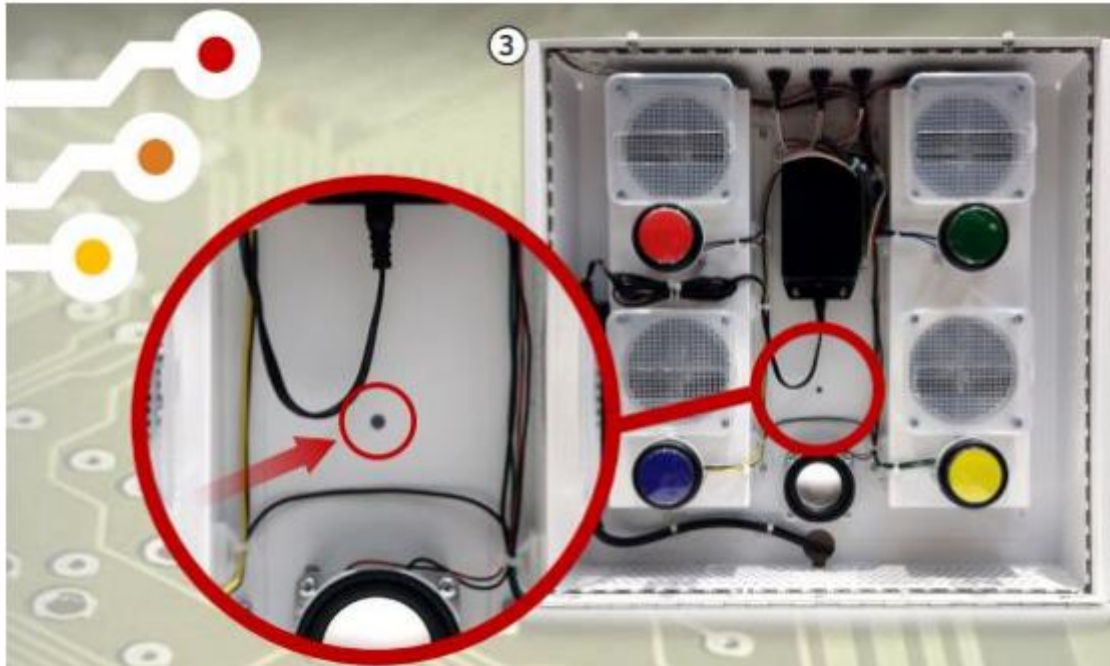




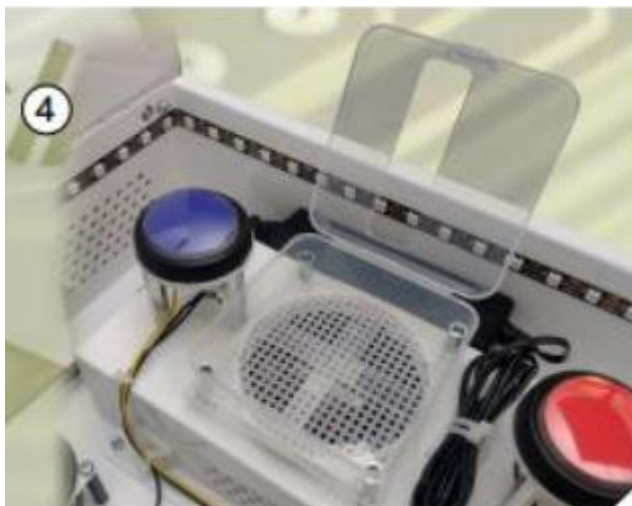
Once the screws are loosened, the perspex front can be carefully swung down (2). Do not let the door drop, as this may damage the perspex front.



A fixing bracket can be used to secure the unit in place (3). This prevents the Aroma Panel from being lifted off the mounted surface. Once mounted, the device can be connected to mains power.



The 4 transparent boxes can be opened so that the user can insert the desired scents (not included) (4). It has four cartridges in which scent pads (17048170) are placed, one per cartridge. A few drops of essential oil can be added to the pads, allowing the scent to be evenly dispersed. From lavender to eucalyptus: the choice is yours. The pads are easy to replace, allowing you to quickly adapt to different wishes and needs. (scents and scent pads not included)



For more information, you can visit our website www.nenko.com