

1. Name of the product

Time Timer Watch

2. Product code

25220471

3. Colour

As illustrated



4. Short description

With the Time Timer watch Plus you are even more mobile than before! A contemporary designed clock with many applications. Suitable for anyone who benefits from time management. Easy to operate.

5. Product specifications

12 x 17,7 cm

Including 1 x CR2032 battery

Settings key:

Indicates alarm is set

Audible alarm

Vibrate alarm

Audible + vibrate alarm

No alert (silent) alarm

60-minute timer, up to 60 minutes

Custom timer, up to 99:59 minutes

Repeat timer

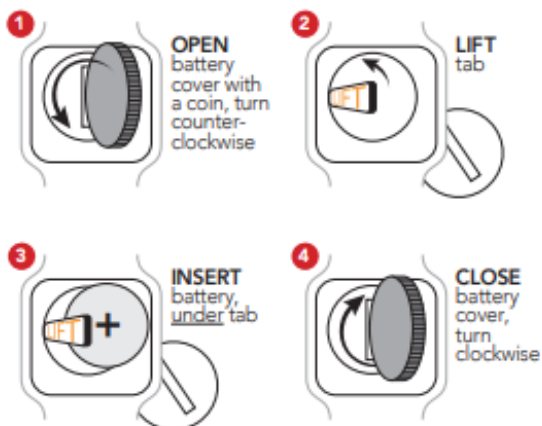
One-time timer

Clock mode

6. Assembly

Step 1:

The Time Timer Watch uses a red disk to visually depict how much time remains. As time elapses clockwise, the disk gradually disappears, helping you see and manage time more effectively.



Step 2:

Time Timer Watch has 3 modes:



Press the **MODE** button on the upper right to toggle between modes.

Clock mode: The Clock mode displays time of day using both a traditional analog clock face and a digital numeric display. If a Time Timer is running or an Alarm has been set, a unique icon displays on the right side of the watch face. Time can be viewed in 12- or 24-hour format.

Time Timer mode: The Time Timer mode includes two options: 1) Original 60-minute Timer Disk or 2) Custom Timer Disk. The Custom Disk Timer allows the disk to be scaled to represent any duration from 1 minute to 99 hours. A numeric display of time remaining is shown below the red disk. Alert can be set to audible, vibrate, both, or no alert.

Alarm mode: The Alarm mode can be set in 12- or 24 hour time formats. Set alert to activate alarm. Alert can be set to audible, vibrate, both, or no alert.





Step 3:

1. Press **SET** for 3 seconds to start.
2. The first setting will start to flash.
3. Press (+) and (-) to adjust time or to toggle between setting options.
4. Press **NEXT** to continue *or* **SET** to confirm and exit.

A time-out will occur after 20 seconds of inactivity. Press **SET** for 3 seconds to restart.



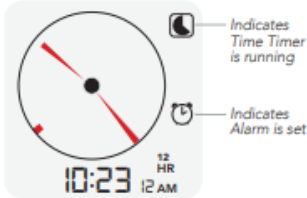
Step 4:



Step 5:

CLOCK MODE SETTINGS

Press SET button for 3 seconds to begin modifying settings.



- 1 Set hour, minutes, and seconds
- 2 Select 12- or 24-hour clock mode
- 3 Select AM or PM for 12-hour mode only

TIMER MODE SETTINGS

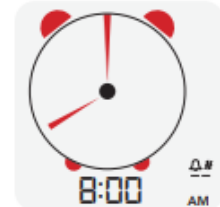
Press SET button for 3 seconds to begin modifying settings.



- 1 Set hour or minutes
- 2 Select alarm: audible, vibrate, both, or no alert
- 3 Select timer: 60-minute or custom timer
- 4 Select repeat timer or one-time

ALARM MODE SETTINGS

Press SET button for 3 seconds to begin modifying settings.



- 1 Set hour or minutes
- 2 Select AM or PM for 12-hour mode only
- 3 Select alarm: audible, vibrate, both, or no alert

Step 6:

BAND REMOVAL



1

Slide lever inward to unlock band.



2

While holding lever, release left pin, then right pin.

Follow steps in reverse to replace a band.

7. Usage

The Time Timer Watch uses a red disk to visually depict how much time remains. As time elapses clockwise, the disk gradually disappears, helping you see and manage time more effectively.

Clock mode: The Clock mode displays time of day using both a traditional analog clock face and a digital numeric display. If a Time Timer is running or an Alarm has been set, a unique icon displays on the right side of the watch face. Time can be viewed in 12- or 24-hour format.

Time Timer mode: The Time Timer mode includes two options: 1) Original 60-minute Timer Disk or 2) Custom Timer Disk. The Custom Disk Timer allows the disk to be scaled to represent any duration from 1 minute to 99 hours. A numeric display of time remaining is shown below the red disk. Alert can be set to audible, vibrate, both, or no alert.





Alarm mode: The Alarm mode can be set in 12- or 24 hour time formats. Set alert to activate alarm. Alert can be set to audible, vibrate, both, or no alert.

10. Common questions

Is watch water resistant?

Watch is waterproof up to 30 meters as long as buttons are not pressed while watch is submerged in water.

How do I set a repeat feature?

In Time Timer mode only, follow step 4 and select the repeat timer option:

Why do my settings time-out?

A time-out will occur after 20 seconds of inactivity. Press SET for 3 seconds to restart.

What are the watch default settings?

Clock - active state (12hr) Timer - 15 minute (Original 60-minute Timer Disk) Alarm - 8:00 AM (no alert)

What is the battery life?

The expected life of the battery is approximately eight months, based on typical use. If the watch is used to time a short duration (or left running) on the repeat function with vibrating alert, then the battery life will be significantly shorter due to the higher battery requirements for vibration. If a spontaneous watch reset to original factory settings occurs, there is no backlight or a dim display, please replace the battery.

What type of battery is it?

CR203