

1. Productname

Shimmering curtain 100 x 200

2. Product code

20322080

3. Colour

See Image

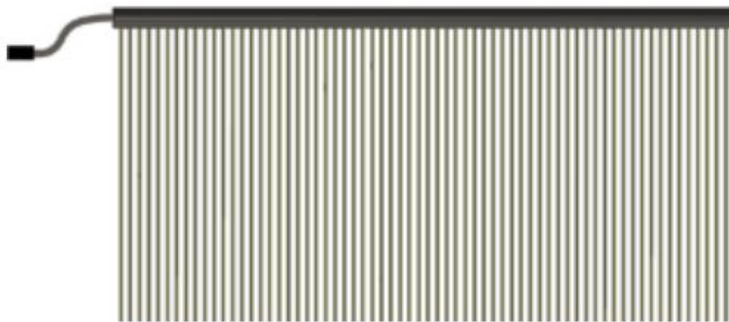


4. Brief description

The main therapeutic direction of light curtains is the stimulation of the visual system, which affects the child's psycho-emotional state. A spectacular 1 meter wide curtain of fiberopticstrands that constantly changes color. With 66 plastic fiber optic strands. The fiber strand should not be pulled, risk of damage or the train to fall off.

NB . Light source is not included and must be ordered separately!

5. Content



1x shimmering curtain



2x mounting brackets

Optional item (depending on selected version)



1x lightsource



6. Sensory stimulation

Sight and Touch

7. Installation

Mark the positions for 2 mounting brackets on the wall. These should be placed about 5 cm from each end of the rail curtain. Drill holes to place wall plugs suitable for M4 self-tapping screws. Place the wall plugs in the holes and screw the mounting brackets firmly to the wall.

Keep in mind that the required wall plugs and screws depend on the type of wall surface on which you mount the pipe. Make sure you use the right products and consult an expert person if in doubt.



Twist the screw through the big hole at the front. Closure at the bottom. Completely twist the screw through the hole on the back and into the wall.

Slide the rail curtain through the mounting brackets - the fiber ends will slide through the opening at the bottom of the brackets.

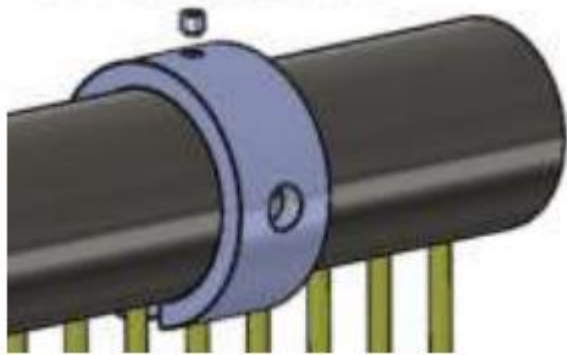


Attach the curtain rail to the brackets by tightening the supplied Allen screws in the top holes of the brackets using the supplied Allen key.

Connect the fiber harness to the light source and turn it on.

Attach with an Allen screw.





Connect the fiber harness to the light source and turn it on.

Manual Lightsource

1. Productname

Nenko Interactive Lightsource

2. Productcode

18517112

3. Colour

White



4. Brief description

Light source for fiberoptic strands WiFi compatible with the entire "Nenko interactive" series. Equipped with ON/OFF and PAUSE push button for a fixed color, switch and USB connection for service purposes. With maintenance-free LED lighting. Works on the NENKO interactive switch panel (to be ordered separately). Opening for fiber optic strands = 3 cm diameter.

5. Content

1 x Nenko Interactive Lightsource
1 x Adapter with American, European and Australian attrition

6. Sensory stimulation

Sight

7. Safety

- Suitable for indoor use in dry rooms.
- Do not try to open the light source, it contains sensitive electronics.
- Make sure the light source is mounted in a place with good ventilation and not under cushions or the like. The unit will heat up and needs ventilation.
- Attach nothing but a fiber mist beam in the round recess of the light source.
- Use only the power adapter that came with the product.





8. Technical information

Power adapter:

- Input (power adapter) 100-240Vac 50/60HZ
- Input amperage 0.6A
- Output (power adapter) 12V 1.25A (15Watt)
- Approval: CE, UL, CUL

Light source:

- Input voltage 12V
- LED output power 9W
- Approval: CE – ROHS

9. Installation

Step 1:

Carefully remove the packaging from the light source.

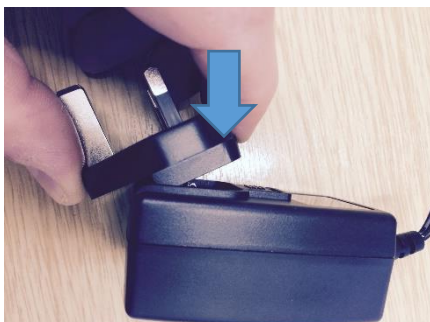
Step 2:

1. Fix the metal round end part of the fiber mist in the round recess of the light source. Before doing this, make sure that the screw is unscrewed at the top so that the fiber mist fits snugly into the recess.
1. Make sure that the fiber mist is as far as possible in the round recess. You may need to move the fiber mist back and forth to ensure that it is slid into both the inner and outer rings.
1. Tighten the top screw to lock the fiber mist in the light source.



Step 3:

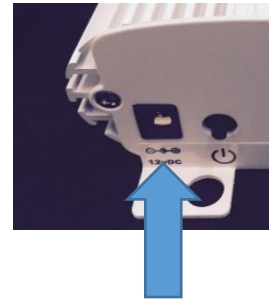
Unpack the power adapter and choose the right connection for your country of choice. Do this by first attaching one side of the plug connector of your choice and then sliding it to the end point and clicking into place.





Step 4:

Connect the connector at the end of the power adapter to the power connector of the light source.



Step 5:

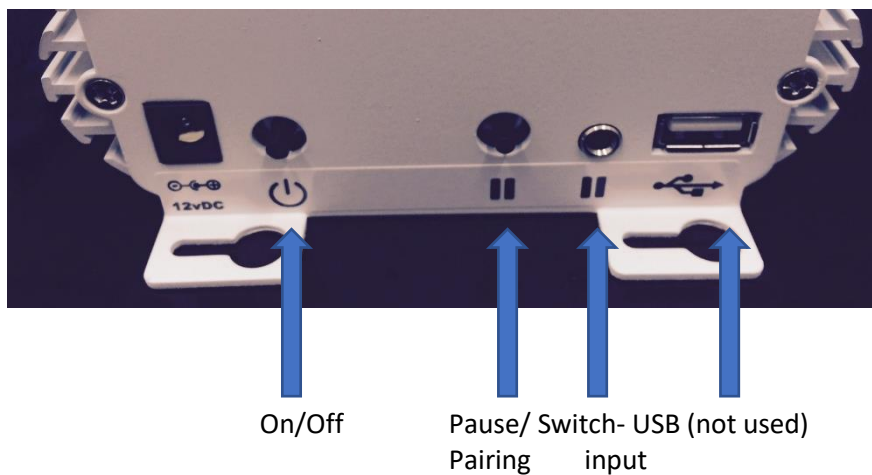
Plug the power adapter into the power outlet.

Step 6:

Turn on the light source with the on/off push button.



10. In Use



On/Off: Use this button to turn the light source on and off.

Pause: Press this button briefly to stop the color change. Press again to resume color change.

Pairing: Press and hold the button for 7 seconds until the light source flashes PINK.





The unit is now set to "PAIRING MODE". In this mode, it slowly flashes PINK until it receives a pairing signal from the Nenko Interactive Color Switch (22009). Press again for 7 seconds to cancel the "PAIRING MODE"

Switch input: Same function as the PAUSE/PAIR button, only performed by a Play switch with a 3.5mm jack connection (not included). Ask for the possibilities.

USB: Currently this input is not used/not pre-programmed.

For more information please visit our website www.nenko.com

